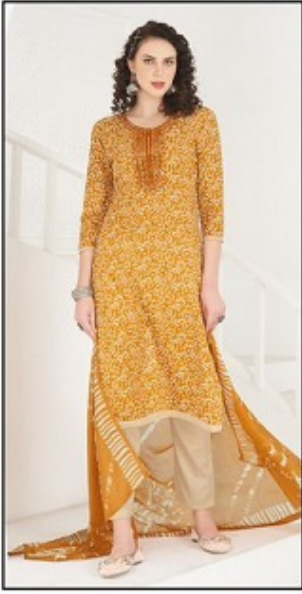


A woman with dark, curly hair is leaning on a white wooden railing. She is wearing a red dress with a white floral pattern and a matching red shawl with a white floral pattern. She is also wearing a silver bracelet, a large ring, and large earrings. The background is a white wall with a subtle pattern.

**AK**  
**AL KARAM**<sup>TM</sup>  
LAWN COLLECTION

**HERITAGE**  
SELF EMBROIDERY WORK  
VOL-03



3001



3002



3003



3004



3005



3006



3007



3008

**AK**  
**AL KARAM**™  
 LAWN COLLECTION

**HERITAGE**  
 SELF EMBROIDERY WORK  
 VOL-03

**AK**  
**AL KARAM**<sup>TM</sup>  
LAWN COLLECTION



D.NO. -3001

**AK**  
**AL KARAM**<sup>TM</sup>  
LAWN COLLECTION



**D.NO.-3002**

**AK**  
**AL KARAM**<sup>TM</sup>  
LAWN COLLECTION



**D.NO.-3002**

**AK**  
**AL KARAM**<sup>TM</sup>  
LAWN COLLECTION



*D.NO.-3003*

**AK**  
**AL KARAM**<sup>TM</sup>  
LAWN COLLECTION

*D.NO.-3004*



**AK**  
**AL KARAM**<sup>TM</sup>  
LAWN COLLECTION



*D.NO.-3005*



**AK**  
**AL KARAM**<sup>TM</sup>  
LAWN COLLECTION



*D.NO.-3006*

**AK**  
**AL KARAM™**  
LAWN COLLECTION



D.NO.-3007

**AK**  
**AL KARAM**<sup>TM</sup>  
LAWN COLLECTION



*D.NO.-3008*